

October Meeting. Talk by Bill Welsh.

The impressive memorial to Giles and Margaret Earle in the North Aisle of Holy Cross Church was made by Nollekens, one of the most fashionable portrait sculptors in Britain in the 18th century. The link to Down Hatherley, in Gloucestershire comes through Margaret Brett who married Giles Earle of Eastcourt, a soldier and MP for Chippenham and Malmesbury. It is thought that the graves discovered when the floor of the North Aisle was taken up for repair are the graves of Margaret and Giles Earle.

Bill Welsh, from the Down Hatherley history group, gave an interesting and well-informed talk on the background of this link. It has opened up more areas for research into the Earle family which the group hope to do over the coming months.

Metal detecting and the search for the site of the Hankerton windmill.

A group have started to follow up on research of the maps of Hankerton to discover the whereabouts of the windmill – presumably it was on Windmill Lane! The initial search has looked at earthworks on the lane leading to Crudwell. The metal detecting has not found anything of importance yet – though someone in the past (1920s?) dumped a car there! We will continue in this quest next year.

2014 – a special commemorative year.

We plan to mark 2014 as the centenary of the start of the First World War by a series of talks culminating in an exhibition. Along with the men from Hankerton we would like to honour those from our families who fought in this war. If you have a relative you would like to include in our exhibition please contact Susan Mockler to talk about our plans. We would welcome any information or artefacts anyone has to include in the exhibition planned for later in the year. As we remember the Great War, the first talk in March 2014 will be about its origins, starting from 1870 with the Franco-Prussian War and the rise of German imperialism, researched and given by Craig McCallum.

The group has recently formed a link with the West Wiltshire Industrial Archaeological Society and they kindly invited us to join them on a visit to Moulton Bicycles at Bradford on Avon. Six of our members took up the invitation and were fascinated by the history and the manufacturing still going on. In the early part of the 19th Century Stephen Moulton became a pioneer in the development of the industrial use of rubber. He introduced the use of sulphur in the curing of rubber to this country under licence from Charles Goodyear in the USA. As a result he became very wealthy and built a very unique mansion and a rubber mill in Bradford. Although now empty this house still stands and is beautifully preserved with it's almost totally glass front and box structure interior.

Dr Alex Moulton, the grandson of Stephen, developed the Moulton Bicycle which features small diameter wheels and of course rubber suspension. This was very successful and dominated the British built steel framed cycle market for some considerable time. Today the design has been through many development cycles and is very much the Rolls Royce of the cycle market selling for many thousands of pounds. Apparently this product is in great demand in the Far East, Japan in particular. During the 60s and 70s Dr Moulton worked with Sir Alec Issigonis and developed the rubber suspension system for the Mini being built by the British Motor Corporation. This was further developed to the Hydragas and later the Hydrolastic suspension systems used on Minis and other cars.

Susan Mockler

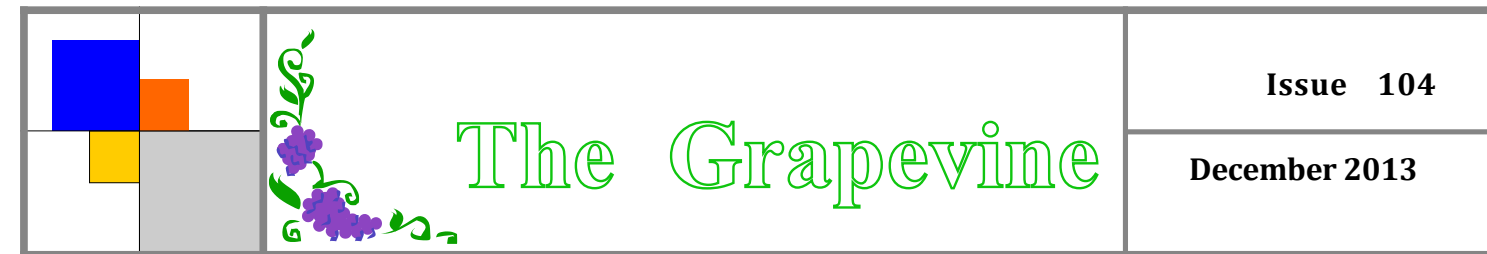


MINETY MOBILE FOOT HEALTH

Treatment in the comfort of your own home

The human foot is a masterpiece of engineering and a work of art (Leonardo da Vinci)
Do you have problems with :
Corns Callus Verrucae
Ingrowing Toe Nail
Athlete's Foot
Thickened Toe Nails
Fungal Nail Infections

If so, for professional treatment and comfortable feet call **JANE ON 01666 861281 or 07958 018594** to book an appointment (answerphone in operation)
Jane Snook, SAC Dip FHPT; SAC Dip FHPP

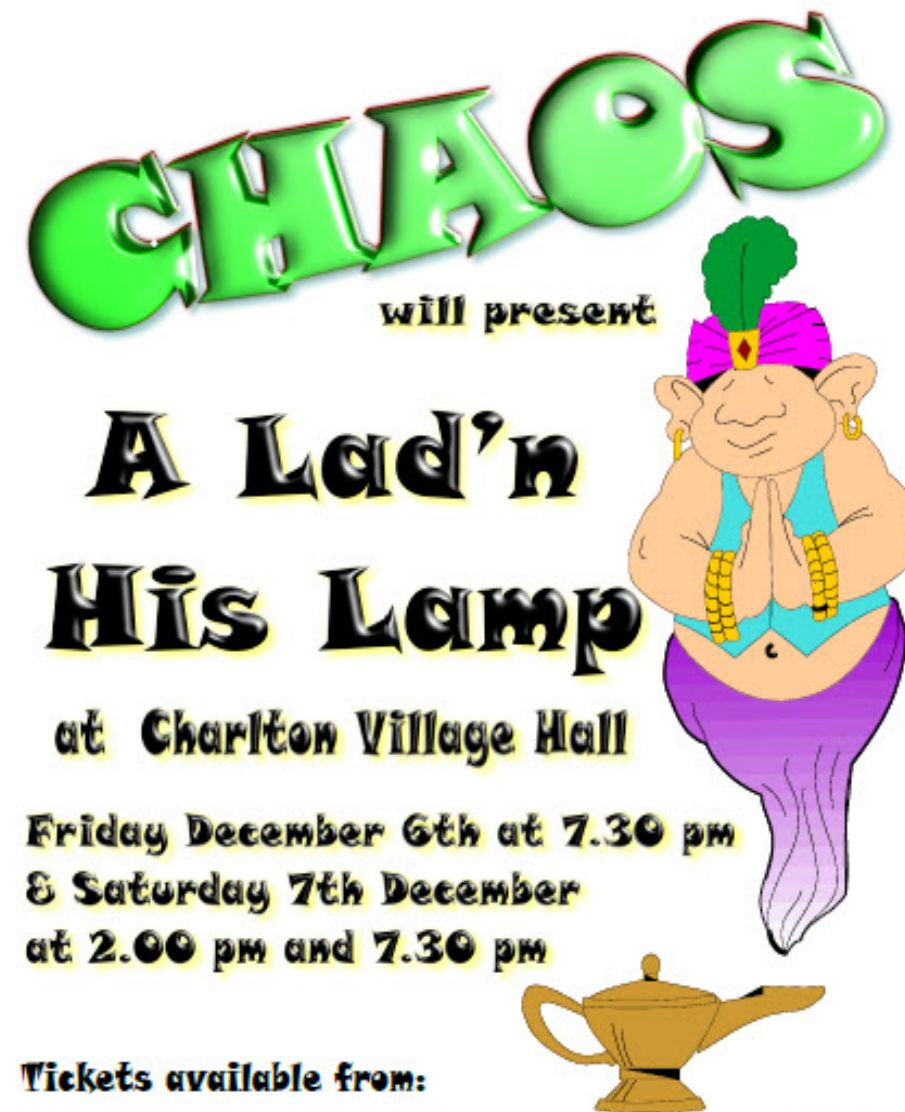


Editorial

After a glorious summer, winter roars in and chases away autumn. Winter has very few redeeming qualities. Many animals (and Grapevine editors) find that the best thing to do is simply sleep through it. Studies show that human beings sleep more during the winter months.

One of the few redeeming qualities of winter is snow. There are few things more magical than looking out the window from your house and discovering those first flurries gently falling to the ground. When the snow builds up outside our homes it envelops us in a warm cocoon. The time has come to put on your warm slippers, light the fire, a cosy blanket, and curl up with some hot chocolate and perhaps a glass of mulled wine.

Have a wonderful Christmas and a happy New year to all our readers
Eds.



Tickets available from:

Sue Mockler 577526
Doreen Austin 825299
Chris Jarvis 577488

Adult £6.00 Children £3.00



Next Newsletter to be published in February 2014 please send copy to
Craig McCallum
19 Follyfield
Hankerton
SN16 9LA
CraigmcCallum@Btinternet.com
by 10th January 2014 please.
All opinions expressed will be solely those of the correspondent
.....And don't forget to visit the
Hankerton Parish Website at
<http://www.hankertonvillage.co.uk>

For Parish Council information

Carol Singing.

The carol singers will be out in force again this year so please listen out for us on the evening of **Wednesday 18 December**. Your donations will, as usual, target local charities.

We meet at the end of Follyfield at 6:30pm and will visit houses with younger residents first as we don't want to keep them up!

We always enjoy our annual sing song but it makes it so much more worthwhile if you open your doors and enjoy our efforts. Your generosity is always much appreciated.

For more information;
Chris Betts 577123
Claudine Pynn 577627

Hankerton Christmas Cards

(for North Aisle Community Area Funds) Hand-finished pictures of the church (please see sample in the Church porch).
50p each or £4.00 for 10.
Please order from Chris Betts

We would like to welcome our new resident cartoonist, Millie Reeves aged 13. Millie's first contribution is on the back page of this issue.

Hankerton Parish Council News

Highlights from the Hankerton Parish Council (HPC) November meeting are shown below.

- 1. The 3 new Hankerton village signs are planned to be erected in December subject to contractors being available.
- 2. The Hankerton Winter Plan has been formalised with Wiltshire Council (WC) who will authorise Thomas Law to clear our village roads and the road to the B4040 at Charlton. He may then be asked to continue with further clearing of other roads in the vicinity.
- 3. The HPC can obtain from the WC handy 3Kg de-icing salt spreaders for those people that will want to de-ice their garden paths. Contact the council for info.
- 4. The Memorial Bus Shelter will soon have a makeover with an additional plaque to the existing plaque giving a little more information on Jack Tugwell and we will be replacing the bench seat with a new one courtesy of the help from Chris Moulder of Hillwell Cottage.
- 5. Brian Dalton has been confirmed as the Flood Warden for HPC and we have also confirmed Mike Goodwin as a Community Volunteer Flooding. See minutes when published as to further work on flooding issues.
- 6. WC made a visit to the village with a view in of getting work done on our road surfaces especially Church Lane.

The Hankerton Web site, <http://www.hankertonvillage.co.uk/> has been extensively updated by our webmaster Elizabeth Jones and is well worth visiting. Elizabeth, unfortunately, needs to devote more time to her business and Simon Kearsley will be taking over in the new year. Many thanks to Elizabeth for all her work over the past few years and welcome to Simon. Information which can be accessed on the web site includes back issues of Grapevine, links of interest to Wiltshire Council, Malmesbury Council, the Primary Care Trust, previous minutes of Parish Council meetings, contact points for your parish and Wiltshire councillors and Hankerton events.

If you want to add information to the web site regarding local groups or events you can contact Simon at simon.kearsley@symmetry.co.uk

On 21st September Heather Wyman married her fiance, Mike, in Hankerton Church - the service being conducted by the recently ordained priest, the Reverend Sarah Wyman - it's not many people that can say that their mother married them! A reception for family and friends was held in a marquee in one of the Grieson's meadows - and was followed the next day by a buffet lunch for the many friends from the village who helped with the wedding or have been part of our family's life here in Hankerton over the years we have been here. Hankerton is a special place - and we were so glad that so many people from the village gave us their support, help and good wishes through our special weekend. Peter and Sarah Wyman





The
GEORGE
Veterinary Group


Individual Veterinary Teams For Your Individual Needs

TETBURY 23 Church Street
Surgery : 01666 503531

MALMESBURY 18-20 High Street

Hospital : 01666 823165
Equine Clinic : 01666 826456
Farm Vets : 01666 823035
Pig Practice: 01666 823355

Join us on FACEBOOK or at
www.georgevetgroup.co.uk



ANDY EVANS
PLASTERING AND PROPERTY MAINTENANCE

General property maintenance
Plastering | Rendering
Structural work | Coving
Painting & decorating | Flooring
Tiling etc.

Mobile: 07769 259262
Email: info@andyevans.org.uk | Website: www.andyevans.org.uk

Hankerton Golf Club

Craig, as editor, desktop publisher, accountant, sales and supplier liaison for Grapevine, most humbly apologises to the Hankerton Golf Club (Peter) for omitting the punch line for the Golf joke in the last edition.. Strangely enough, only one of our readers noticed this. Therefore, here is the missing punch line.
'..... "She is still with the buggy" I said.'
With that out of the way, here is the HGC golfing joke for December, with apologies to any Irish readers

Irish Golf

Michael and Seamus are standing on the 18th tee at the Dublin Country Club. They are the final twosome in the Dublin Country Club Championship and are tied for the lead. The 18th hole is a beautiful par four with a deep valley descending down to a dogleg right. Both Michael and Seamus hit long, straight tee shots which disappear down into the valley. A short time later, the fore caddie appears at the top of the hill and announces that both balls are within 6 inches of each other, but there's a problem. Both of the golf balls are Titleist #4s. Michael and Seamus look at each other and realize that they had not informed each other as to what kind of ball they were playing, nor its number. They quickly descend into the valley and sure enough, their two Titleist golf balls are right next to each at the bottom of the valley in the middle of the fairway. Michael looks at Seamus and says, "To be sure.....We had better get a ruling from a tournament official to straighten this out." "This is the Dublin Country Club Championships and we don't want to be disqualified for making a mistake and hitting the wrong ball. After all, we are tied for the lead." Soon after, a rules official appears and examines the two #4 Titleist golf balls. He then looks up at Michael and Seamus and says, "Begorrah! Which one of you is it that's playing the orange ball?"

Neighbourhood Watch.

There have been a number of break-ins in the Malmesbury area over the last few weeks. Please keep an eye open for unusual vans, cars or activity and remember to pay attention to house security especially locking doors and closing windows.



LITHOGRAPHIC PRINTING SOLUTIONS
28-30 Calne Business, Harris road, Portemmarsh
Industrial Estate, Calne, Wiltshire, SN11 9PT
Tel: 01249 823950
Contact: Jake.fortune@jamprint.co.uk

Lane's Cleaner Windows
Pure Water Window Cleaning Technology
Conservatory, Cladding
Guttering and Fascia Cleaning.

Tel: 01666 825920
Mobile: 07709 363325
Info@Lanescleanerwindows.co.uk
Call Ian for a free quotation

Ian Lane
7 Rodbourne Road, Corston
Malmesbury, Wiltshire
SN16 0HA




We all value our independence and our Assitive Living team can help you to keep yours.

We can help with things like:

- Putting up shelves and curtain rails
- Moving furniture around your home
- Fencing
- Making your home safe and secure.

For more information
Call **0333 400 8299** or email info@asterliving.co.uk





Goldborough Garden Machinery Broad Town,
Wootton Bassett and Dauntsey

Tel: 01793 848027 (office)
Winter service for:

Cylinder, rotary and ride on mowers
Hedge cutters : Chain saws : Strimmers
Rotovators : Leaf blowers : Petrol disc cutters
Tool repairs: Handle replacement,
blade sharpening etc.

Prompt efficient service
Collection and Delivery service available

07766 735685 (Maurice Nash)
07946 895104 (Roderick Hazell)