

The Grapevine



The Coronavirus has certainly had a major impact on all our lives affecting families, couples and those living on their own. Hankerton was quick to react in March with the village WhatsApp linking those in need to people who could help; so all was in place for Lockdown Mark II in November. It is thanks to this neighbourliness, thoughtfulness and caring attitude that everyone in Hankerton is catered for, whether it be a friendly hello, shopping or help with computers.

Christmas is coming, no matter what, so let's ensure everyone has as good a time as possible- not only in our small community but also our wider one. Chris Betts is organising the collection for the Food Bank and there is a suggestion that we all light up our houses to brighten up the gloom. Thank you to the growing number of contributors to the Grapevine who are providing interest

pages, humour and information.
We wish everyone a Happy Christmas,
The editors



Remembrance Sunday 8th November

Thank you to the 47 who attended the short service in the churchyard on Remembrance Sunday. The collection was £204 which is being sent to The Royal British Legion.

Philip Carter

Deadline for news for the **February** Grapevine: **January 10th 2021**

The size and content of The Grapevine depends on the amount of copy we receive from individuals and groups, so please keep the news and events coming in!

All articles, adverts to be sent to: grapevinesn16@aol.com

Or to 21 Follyfield, Hankerton. SN16 9LA

The opinions expressed are the responsibility of the authors.

We reserve the right to edit material.

A cold December morning, the sun rising behind a grey mist, the ground beneath your feet hard with frost, the air still but cold enough to penetrate the thickest coat, and drifting across the empty countryside the sound that typifies the season perhaps more than anything. It's the triple "caw" of a Carrion Crow (*Corvus corone*). Harsh and confident, and maybe just a little unsettling. After all these birds have a life-style that lives up to their name – feeding on anything that is no longer of this world, and more!

This is a successful member of the Corvid or Crow family, living in a wide variety of habitats across the whole of Great Britain, except for the north west of Scotland, where the Hooded Crow dominates. They are both the same species, and the Hooded is considered a "race" of the Carrion Crow. While the Carrion Crow is uniformly black in colour with a thick solid bill, the body of the Hooded Crow is grey in colour with black wings and head. There is some overlap of the territorial edge up in the north west of Scotland, and although they can interbreed producing hybrids of varying grey-black colouration, they do tend to keep to themselves and breed pure. Which of the races considers themselves superior, I do not know!



The fleshy remains of animals, (and historically, those of deceased soldiers on the various battlefields of this country), is not the only food the species eats. For if you are going to be successful, you don't want to limit your nutritional opportunities. They will also eat a lot of insects, spilt grain, enthusiastically taking small rodents, the eggs and young chicks of breeding birds, and for those birds living close to the coast, shellfish and dead fish are also on the menu. I have seen crows flying up into the air carrying mussels and

dropping them on to hard ground or stony areas to break the shell enough to allow them to eat the shellfish within. This seems to indicate a good degree of intelligence, and that perhaps helps explain their success.

A pair of crows will nest singly, unlike that other member of the crow family the Rook which nests communally in a rookery. Crows build a large nest of sticks, twigs, mud, and turf, lined with moss, grass and sheep's wool, and usually situated more than 5 metres up in a large tree. Four to six mottled grey/green eggs are incubated for 18 – 21 days, during which period the male brings food to the female. The young fledge at 4 to 5 weeks of age and then roam the countryside with the parents.

Crows do however socialise with other members of the crow family at feeding sites and roosts, and you will often see mixed flocks of crows, rooks and jackdaws exploiting a feeding opportunity. There is a rule that generally runs true, that if you see 6 crows together they are rooks and if you see a rook on its own, it's a crow! At this time of the year large mixed flocks can be seen on the arable fields opposite Follyfield, and in the evening they are quite an impressive sight as they leave and fly towards the east side of Charlton to roost for the night, sometimes performing aerobatics as they go. I haven't yet tried to follow them to see where they are going for the night, but if you are up early enough you can see them coming back from that way again. Uniformly black they may be, but that doesn't make them uninteresting. They are clever opportunists and well worth spending some time watching their enterprising behaviour.



Have beautiful nails this Christmas

- Gel polish – Hands – Feet -
- Manicure – Pedicure – Nail Art -



**GIFT
VOUCHERS
AVAILABLE**



To book an appointment, please call or text Emma
on **07595 618662** or **01666 577905**.
12 Follyfield, Hankerton

The Nail Cabin will re-open subject to Government guidelines
(Due to current restrictions, payment by card or bank transfer
is preferred)



@the_nailcabin



@thenailcabincotswolds



ROAD SAFETY

Many of us are concerned about the speed of some cars, tractors, vans etc passing through the village whose roads have few pavements.

The Parish Council has proposed to place some roadside signs to encourage drivers to reduce their speed thus making our roads safer.

If you object or have reservations please communicate your thoughts urgently to The Parish Council. Even better would be your positive ideas and support.

Dai Davies

Patient Participation Group

When the pandemic hit, all UK GP practices were instructed to ensure consultations were conducted in a safe socially distanced format i.e. via telephone or video. Face to face and home visits could only be considered when remote methods were not sufficient or if it was deemed clinically essential.



Currently, if a patient requests an appointment it is passed to a GP for assessment via a phone call. If the matter cannot be resolved at that time with aid of videos or photographs then a face to face appointment at the surgery is offered. Hundreds of patients are seen at the surgery every week and approximately 20% of GP consultations are still face to face.

The new way of working has been adopted with more success than could have been hoped for. Gradually some of the 'old ways' are being reintroduced and equally there are several 'new ways' of working which have gone down well and will be kept.

Malmesbury Primary Care Centre (MPCC) is aware that getting through on the phone can be difficult at times and is in part due to the newer ways of working, as the number and length of calls made has significantly increased across the whole day. The surgery is however looking to improve this.

Ear Syringing

One service that has been halted is Ear Syringing due to the risks to staff. This has recently been reviewed and from October MPCC will be holding a weekly clinic to provide limited access to patients needing the procedure, however the rules are somewhat tighter and more restrictive as nationally the evidence for its effectiveness has been clarified. It might be worth noting that NHS Wiltshire CCG does not fund this procedure, and so many practices locally do not provide the service at all.

Flu jab

Over the next few months thousands of patients will be having their flu vaccination. The vast majority will be given in special clinics held at MPCC. Early clinics have been a great success and many comments have been made about how efficient and safe it has been.

Clinical Pharmacists

The surgery benefits from the services of Rachel Dolman and her team of clinical pharmacists who work for the local Primary Care Network, which covers practices in Malmesbury, Sherston, Royal Wootton Bassett, Purton and Cricklade.

The team's main aim is to support the GPs and patients to ensure their medication is managed in the best possible way, and help to make changes when better alternatives become available. They undertake medication reviews and support the management of patients with long-term conditions. They are heavily involved with medicines safety and work with local community pharmacies and care homes.

First Contact Physiotherapy

Since June 2020, if you have contacted your GP at MPCC with acute or chronic musculoskeletal presentations, such as spinal pain or shoulder pain you may have been assessed, diagnosed and treated, not by your GP but by a team of First Contact Physiotherapists.

First Contact Physiotherapists are highly skilled and experienced NHS Chartered Physiotherapists. They can complete a thorough physical assessment, prescribe exercise, suggest lifestyle changes and access medical investigations such as x-ray or MRI scans, or refer to other specialities such as orthopaedics or rheumatology, if deemed necessary.

This initial contact directly with a physiotherapist has helped to lessen the strain on GP practices and offers quick access and high quality care to patients.

If anyone would like to raise a question or provide feedback about the service they've received from the MPCC I'll be very happy to take this forward for you. If you could let me have the details, my telephone number is 07856202115.

Shayne Smith





CHILDRENS CORNER

WATCH OUT – SCOUT'S ABOUT!

Hello everybody - my name is Scout and I'm a Miniature Schnauzer. I live with my servants in Hankerton and I like going for long walks (as long as it isn't raining – don't like rain – nasty wet stuff), eating (anything – well, except yucky celery, I won't touch that which is strange because I will eat horse poo but celery is much much worse) and destroying my servant's furniture (really not sure

why they get so mad). I always like to look my best – at the moment I am sporting a purple ears and tail combo but that sometimes changes on a weekly basis. Look out for me around the village and see what new colours I'm wearing this time.

Bye for now. Woof Woof!



What do Santa's little helpers learn at school? The elf-abet!

What do you get if you cross Santa with a duck? A Christmas Quacker!

Why was the snowman looking through the carrots? He was picking his nose!

What do snowmen wear on their heads? Ice caps!

What do you get when you cross a snowman with a vampire? Frostbite!

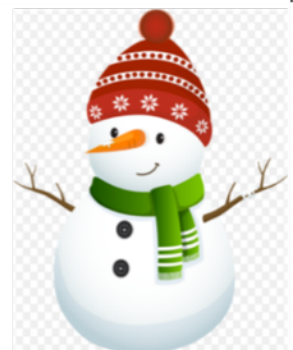
How did Scrooge win the football game? The ghost of Christmas passed!

What do angry mice send to each other at Christmas? Cross-mouse cards!

What did the beaver say to the Christmas Tree? Nice gnawing you!

Who hides in the bakery at Christmas? A mince spy!

What do snowmen have for breakfast? Snowflakes!



Help Santa solve this puzzle!



A4 Stationers

A4 Stationers are conveniently located near the top of the High Street in Malmesbury and stock a comprehensive range of art supplies and stationery.

They also provide the following services:

Photocopying

Printing

Laminating

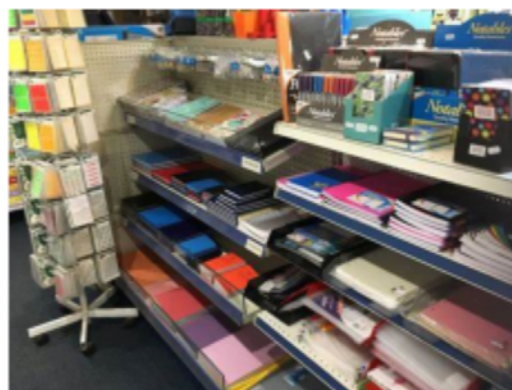
Document Binding

Bespoke rubber stamp ordering

Cine and VHS to DVD transfers.

We at The Grapevine can highly recommend them for their friendly and helpful service – after all, we used them as our printer for several years!

For more information call Jane on 01666 824433 and support our local shops!





Neapolitan Pizza

Order anytime up to 7pm Friday.

Deliveries Saturday from 6pm.

Marinara – Tomato, Fresh Garlic, Oregano, Basil & Olive Oil. £6

Margherita - Tomato Sauce, Grana Padano, Fior di Latte cheese, Basil, Olive Oil. £7

Pepperoni – Tomato Sauce, Mozzarella, Grana Padano and loaded with Pepperoni. £8

Horny Goat – Goats cheese, Spinach, Caramelised Onion & Fior di Latte £9

Diavola – Napoli Salami, Roquito Peppers, Tomato Sauce, Mozzarella, Grana Padano and finished with Hot (spicy) Honey. £8

Blistered Peppers – Tomato Sauce, Grana Padano, Mozzarella, Roasted Peppers, Olives & Basil £8

Wood Fired BBQ Pork – BBQ Sauce, Pulled Woodfired pork, Red Onion Rings, Mozzarella. £9

Pimp the Shrimp – Tomato Sauce, Mozzarella, Prawns & Garlic. £9

Old Skool Cool – Smoked Ham, Tomato, Mozzarella with either Mushroom or Pineapple £8

Five Spice Duck – Hoisin base with shredded Duck, Mozzarella and Spring Onions £9

Next dates – December 5th and 19th

Please call Warings Catering on 01666 824379 to order

All our deliveries will be totally non-contact. Payments must be made by bank transfer online. We will leave your delivery outside the door and retreat to a safe distance to make sure it has been taken in.

All our pizzas contain Gluten! Fresh Gluten Free dough requires 24hrs notice Please call to discuss any dietary or allergen requirements

HEAR TO LISTEN

Following The Parish Council meeting on November 2nd it was decided to try to offer people living in Hankerton additional help.

The second Covid lockdown may go on for some time and with Christmas around the corner some of us maybe lonely, anxious or angry.

We can offer a befriending/listening and talking service using local supporting neighbours with past experience of helping. This help is open to the young as well as the not so young.

If you would like more information please contact Dai Davies, FRCS, who is acting as a co ordinator.

01666 575 340

email:dai_davies@hotmail.com



Lockdown Help

There are plenty of support groups in the local area.

The Hankerton Village Whatsapp group is still live and here to help. So if you need help with shopping, picking up prescriptions or any other general issues please feel free to put a request out via the Whatsapp group. If you are not on the group (or do not subscribe to Whatsapp) please pass your request on to Robin Tjolle - robintjolle@aol.com / Tel 07801 891429 or Geoff Preston grapevine@geoff-preston.com / Tel 07785 106035 . Geoff is also on hand to help with any computer (PC/Mac) or software problems residents might have as well.

The HEALS group in Malmesbury is also still there to support and also doing a wonderful job. Contact details - 07931 098347 / heals.malmesbury@gmail.com <http://www.healsmalmesbury.co.uk/contact-us.html>

There is also the NHS Volunteers group who are able to offer support with shopping, medication or other essential supplies as well as check in and chat and some patient transport. Residents can be referred or you can self-refer - call 0808 196 3646 between 8am and 8pm or visit: www.nhsvolunteerresponders.org.uk

The Wiltshire Wellbeing Hub remains open Monday to Friday, 9-5pm via the helpline on 0300 003 4576 or e-mail wellbeinghub@wiltshire.gov.uk. The hub will not be providing food parcels directly, but have a range of support options to ensure that residents get the help they require. This includes signposting to community groups, as well as referring to the NHS volunteers, supporting with priority supermarket slots and working with pharmacies to arrange direct delivery of prescriptions. There will be a further information on this to follow.

Church Matters

There will be a Carol Service in the churchyard at 3pm on Sunday 13th December. We hope to have an external Christmas tree, a lit cross on the tower, candles along the wall, fire pits to keep us warm and music (hum behind your mask). All welcome, wrap up well.

Philip Carter, churchwarden.



Hello

Just a quick word to remind you all that I am around for general help and support on a wide variety of issues including transport, mobility and safety around the home and reducing the feeling of loneliness. Give me a call on 07557 922020 and leave a message. I will get back to you as soon as possible.

Ellen Blacker
Health and Wellbeing Champion





GENTLE ONE

You are the Gentle One who cares and is our Guide.

Each day we are aware of You close by our side

You are kindly but we also feel Your Power - When
we speak with You in this our Quiet Hour.

You watch over us and everything we do – We thank
You, Lord, for all things come from You.

We know You hold us in the Palm of Your Hand.

When things happen in our lives that don't go to
plan

You are our Shepherd and You know our every mood

We recognise Your caring in these hours of solitude

We cannot begin to understand, that is not our way

We just ask that You stay by our side, listen, Lord, we
pray

As You stand by us, we become less frightened

Want to learn about You and thus become
enlightened

You've taken our faint hearts and turned them
around Filled us with such joy and now we have
found

That You are with us when hardship overtakes - As
we flounder and endeavour not to make the same
mistakes.

You are our strong right arm, You are everywhere

Never leave us, Lord, this is our earnest prayer.

(Isaiah 40: 25-31)

© Copyright Shelagh Dalton 1997



MALMESBURY & DISTRICT LINK

LINK CAN TRANSPORT YOU TO MEDICAL APPOINTMENTS

- HOSPITAL/GP
- PHYSIOTHERAPIST
- DENTAL
- OPTICIAN
- CHIROPODIST



Link is a local charity Run by Volunteers

PLEASE CALL 01666 840861

MONDAY TO FRIDAY 9AM-1PM

Email: coordinators@malmesburylink.co.uk



**MALMESBURY &
DISTRICT LINK**

LINK PROVIDES TRANSPORT TO HEALTH APPOINTMENTS



VOLUNTEERS REQUIRED

**Link is a local charity run by volunteers and funded by
donations from clients.**

We pay our drivers a mileage allowance to cover expenses.

WE PICK UP FROM:

BROKENBOROUGH | CHARLTON | CORSTON | CRUDWELL | EASTON GREY
GREAT SOMERFORD & STARTLEY | HANKERTON | HULLAVINGTON
LEA & CLEVERTON | LITTLE SOMERFORD | LUCKINGTON | MALMESBURY
MINETY | NORTON | OAKSEY | SEAGRY | SHERSTON | SOPWORTH

PLEASE CALL 01666 840861

MONDAY TO FRIDAY 9AM-1PM

Email: coordinators@malmesburylink.co.uk

HANKERTON HISTORY – DID YOU KNOW? #2

A few years ago Hankerton History Group obtained a copy of the Tithe map of Hankerton for 1841. It has been a great source of information showing who owns which area of land and who was occupying the land and therefore paying a tithe. Did you know that there were 427 separate parcels of land identified in this small parish?

The map shows the area from the tithe map around the church which is marked by the green diamonds on the right. It is also available on the Know Your Place web site

<https://maps.bristol.gov.uk/kyp/?edition=wilts> where you can overlay old maps with those of today and see what used to exist where your house now stands.



The map also shows where buildings no longer exist. Look at the plot labelled 128. This is the piece of land almost opposite Follyfield. It is described by Historic England as an Outfarm with an L-shaped courtyard and comprised barns and a yard, all were demolished in the 19th century. You can still see the remaining wall if you look carefully through the vegetation, taking care with traffic.

The Tithe map schedule tells us that this piece of land, owned by Earl Suffolk was farmed in 1841 by Daniel

Jacques. Daniel also farmed 27 other pieces of land, according to census records the Jacques family lived in the village between 1841 and 1871.

Whilst having a good look at the wall I am sure you will spot the carved sign on the right. This is an Ordnance Survey bench mark, the height of the horizontal bar was accurately measured by spirit level and used to provide a network of points of known height. They used to be on OS maps and there were around half a million bench marks in Great Britain. They are not needed any more due to GPS mapping and about half have now disappeared.

Happily Hankerton's bench mark is still clearly visible.





Website: wheatsheafcrudwell.co.uk Tel: 01666 577739

We are pleased to announce that we will be continuing with our takeaway service for the foreseeable future.

Available:

Wednesday, Thursday, Friday and Saturday

5.30pm until 7.00pm

Order early to avoid disappointment! Cash or card payments.

Menu choices:

From £9.00

Poached Salmon and pesto salad with new potatoes

Pepperoni or Margherita approx 12" Pizza (pre order before 3pm)

6oz Cheeseburger with chips

Breaded Scampi and chips

Chicken and bacon Caesar salad

Beer battered cod and chips

Chicken Curry with rice

Beef lasagne with chips

Vegetarian option available

Desserts (to be heated at home)

From £4.00

Ginger sponge with custard

Chocolate brownie

Apple crumble served with custard



Lifestyle Health and Beauty would like to remind you about our newest additions to the team.

Naomi is a hairdresser and has been hairdressing in the local area for over 10 years. Her services include cutting, styling, colouring, hair extensions and men's styling.

Aggeliki is our new therapist who has over 15 years of experience. Her speciality is facials; however she is fully trained in manicures, massage, waxing and tinting.

Lifestyle have various offers over the next few months with our new team members.

Call us on **01666 577636** for more information and to make an appointment.

We look forward to meeting you.

www.lifestylehealthandbeauty.co.uk

Luxurious Hair and Beauty treatments in the Heart of Hankerton

Ample free Parking on site – No need to travel to town



A MERRY CHRISTMAS COCKTAIL

Ingredients for one serving

- 1 ounce [Plymouth Gin](#)
- 1 ounce [cranberry juice](#)
- 1 teaspoon [lemon juice](#)
- 6 ounces [club soda](#) (or enough to fill)
- Garnish: fresh (or dried) cranberries

Method

- Pour the gin and juices into an ice filled tumbler
- Stir and top with club soda. Garnish with cranberries.
- Enjoy! Repeat? 😊



Malmesbury & District U3A

Malmesbury & District U3A continues to keep in touch with members with regular editions of the Lockdown News and Zoom events. Some groups are meeting virtually while others were beginning to meet in other ways within government guidelines before the 2nd lockdown.

Our **Zoom** events during December are as follows

December 3rd AGM at 10.30am

December 10th Christmas party at 15.00. The sparkling Christmas fare will consist of stories, poems, drama, jokes and, if the wonders of modern technology can stretch that far, music and 'communal' singing. Will there be a quiz? Well what U3A event is complete without one?

Our January **Zoom** talks are as follows:

January 7th - Brazil - Travels through unknown territory reveal the best kept exotic secrets - Mandy Dobson

As the wife of a British diplomat, U3A member Mandy Dobson had an 8 year experience of working with national and international communities in Venezuela and Brazil. She developed a wide knowledge of the region and an understanding of national cultures. Mandy travelled extensively and led guided tours in both countries, particularly to lesser known places of interest. Her talk will touch on the background history, the architecture, culture and flora and fauna of the area, as well as providing an insight into Brasília, the federal capital of Brazil.

January 28th - Oliver Cromwell and his effect on modern democracy - Howard Robinson

Oliver Cromwell (Howard's nine times great grandfather) is a character who still engenders controversy about what he achieved during the Stuart era. However, Howard believes that Cromwell was, in fact, a great innovator in establishing Parliamentary democracy over and above the power of the monarch. During Cromwell's lifetime, this sadly involved execution of the king. "Cruel necessity!" were Cromwell's supposed words about this event ... but eventually, even after the Restoration of the Monarchy, Parliament has since had supremacy over the monarch. Not a bad achievement for a Fenland farmer!

Malmesbury U3A is now 5 years old and we look forward to being able to celebrate this milestone when life returns to normal. If you are retired or semi-retired do join us. We have more than 500 members and 40 different interest groups including book group, history, gardening, dancing, languages, walking etc. Check our website for an up –to-date list of groups and other information: www.malmesburyu3a.org.uk.

Please contact Elaine Sharp for more information on 01666 823568 or e-mail membership@malmesburyu3a.org.uk



minety

community shop

OPENING HOURS:

Weekdays: 8am - 6pm

Weekends & Bank Holidays:
9am - 1pm

Special opening hours to be
announced for Christmas.

Christmas Events

Your community shop is now stocking a range of produce:

- Christmas Cards (Boxed & Individual)
- Wrapping Paper, Tapes & Labels
- Money Envelopes
- Christmas Crackers
- Chocolates



Christmas Hampers & Kid's Christmas-Eve Boxes

We are pleased to be offering a range of hampers, for both adults and children. Available in £10 increments, can personalise contents by including alcohol, specific foods or small gifts. Pop in store or go online for more information.

Pre-Order a Fresh or Free-range Hiscocks Turkey!

Christmas Raffle

With £650+ prizes up for grabs including:

2 Minety Music Festival Tickets, 4 Person Golf Day, Large load of Logs (£120 worth), Amazon Fire 7 Tablet, 2 Hamper Prizes, Champagne, Amazon Echo Dot, Holistic Massage Session, Whiskey, Golfing Goodies + many more prizes.

Tickets are £1 each or £5 a book with all proceeds going to Minety Community Shop.



Get your tickets in the shop today!

'Minety Community Shop Christmas Raffle' carried out under licence and regulations in line with Gambling Act 2005. £1 per ticket. Draw date 19th Dec 2020 at 14:30pm at Minety Village Hall, Minety, Wiltshire SN16 9QH. Registered with Wiltshire Council Reg No: LN/000018339

The 12 Beers of Christmas

We are proud to announce this holiday season, the launch of the new 'Beer Club' for 2021, a monthly box of 3 different beers from local & unique breweries from across the UK bringing you *something you won't find in the supermarket*.

The 12 Beers of Christmas will give you each week in December, a special box of 3 brews to enjoy in your home, or it can make a fantastic present for family or friends. **12 Beers of Christmas for £33**



The Beer Club Annual subscription is £99 and can be ordered today from the shop for yourself or as gift to others, locally based to Minety area.

Christmas Shopping Day

We'd like to thank everyone for supporting the shop, so why not drop in on 19th December between **9am & 3pm** for a day of mince pies, mulled wine, and Christmas tunes.

If you hate wrapping Christmas presents, bring them to us to do it for you! **From just £1 per gift.**

While you're here, pick up your Christmas hamper orders, last-minute gifts and goodies for the holiday season!

We will also be drawing the winning tickets for our fantastic Christmas raffle. Draw taking place at 2:30pm.



Plus all of our usual products:

Off Licence ● Convenience Goods ● Confectionery
Fresh Produce & Frozen Produce
including a range of local & Minety Made products
● Newspapers & Magazines to order ●

Located: Minety Village Hall Minety SN16 9QH

Email orders to: minetyshoporders@gmail.com

General email: minetyshop@gmail.com

Telephone: 01666 860013

Visit: www.minetyshop.co.uk

We are always looking for more volunteers to help in the shop or on the committee.

For more information call
Steve: 07802 3538325 or
Catherine: 07786522455



minety community shop

Minety Village Hall Minety SN16 9QH
Tel: 01666 860013 www.minetyshop.co.uk
Weekdays: 8am - 6pm Weekends: 9am - 1pm

New Into Your Shop:

Fresh Meat from Hiscocks our local butcher with special orders on request

Fresh Hobbs-House Bakery bread, pastries & cakes orders taken

Freshly made Bean-to-Cup Coffee and other hot drinks

Local Tracklements Condiments ideal for that special occasion

Local Beers & Mates Cider



Plus all of our usual products:

Off Licence ● Convenience Goods ● Confectionery
Fresh Produce & Frozen Produce
including a range of local & Minety Made products
● Newspapers & Magazines to order ●

Support your local shop: Did you know if every household spent just £5.00 per week in the shop the future of the shop would be guaranteed. The Minety Shop is a "not for profit" organisation but needs to cover its running costs.

We are always looking for more volunteers to help in the shop or on the committee.

For more information call

Steve: 07802 3538325 or

Catherine: 07786522455

or email: minetyshop@gmail.com



01666 826456

24 HOUR EMERGENCY COVER
www.georgevetgroup.co.uk



 Find us on
Facebook



AROUND THE CLOCK
EMERGENCY CARE

www.georgevetgroup.co.uk



Malmesbury

01666 823165



**NEWS
flash!**

FOSSEWAY NEWS
NEWSPAPER DELIVERIES

*We deliver newspapers in your area
Seven days a week*

*We can also obtain any magazines
That are printed either
Weekly or Monthly*

*For more information ring Ali
On 01249 448844
Or Email
fossewaynews@gmail.com*

