

The Grapevine



Let's start by wishing you all a Happy New Year!! We're never sure when it's too late to say that but since we don't usually follow convention (one of us still has their Xmas Tree up!) we're going to take the opportunity to say it. It's been a tumultuous start to the year as far as world news goes so let's focus on nicer

things. We saw the Northern Lights here a few days ago and those of us lucky enough to be out at the time enjoyed a spectacular display of nature at its best (can tick that off your bucket list now and much cheaper than that trip to Norway you had planned!). We have interesting and positive news about the village Amenity Area (read on for more info) and it looks like we will be having monthly visits from Pizzeria Italiana from now on (you may have just missed the first one on 30th Jan). We've had to say au revoir to yet another much loved Hankerton resident, Peter Blizzard, who has gone to live with his family in Malvern – we are so used to seeing him around the village it seems strange without him – I still look for him when I'm driving past the bus stop in the mornings. We'd like to wish him all the best and hope he'll come back occasionally to see us – there'll always be cake here for you Peter! Eds.



Deadline for news for the April Grapevine: March 10th 2026

The size and content of The Grapevine depends on the amount of copy we receive from individuals and groups, so please keep the news and events coming in!

All articles, adverts to be sent to: grapevinesn16@aol.com

Or to 21 Follyfield, Hankerton. SN16 9LA

The opinions expressed are the responsibility of the authors.

We reserve the right to edit material.

Nature Diary – February 2026

In the depths of our winter, while having often to put up with cold, wet and windy weather, we can be forgiven for looking forward to being able to enjoy the outdoors in the more clement spring and early summer. Also, we will welcome the return of summer migrants, both insect and birds, and in the case of the latter, enjoy the song of warblers as they establish breeding territories and attract mates. But do they actually go away in winter?

The Blackcap (*Sylvia atricapilla*) is one such warbler, and it can be found in summer in woodland or scrub, but it is now a common garden visitor during the winter months as well. It is mainly a greyish looking warbler, but in the case of the male, it has a black



Female Blackcap

crown or cap, and in contrast, the female cap is chestnut coloured. If seen, there can be little doubt as to the species.

It has a song that is compared favourably with that of the Nightingale but is difficult to distinguish from that of another warbler, the Garden Warbler. However, the Garden Warbler is featureless in its plumage, which will help to easily distinguish between the species if you are listening to one singing – but you have to spot the bird first!

Historically, British Blackcaps migrated in winter to southern Europe and northern Africa around the Mediterranean, returning around April. In recent decades Blackcaps have been seen in gardens during the winter feeding on the bird food

provided and on berries on shrubbery, (during the summer they are insectivorous), and it has now been established by researchers that these winter birds are not British Blackcaps that have decided not to go south, but German and Austrian Blackcaps that have left the generally colder and harsher winter weather experienced there for the less cold, if damper, British weather. So, Blackcaps are one of many bird species that choose to come here for less cold winters.

Come summer the returned adult pair will build a loosely woven nest of stalks, lined with horsehair or other animal hair, in the fork of a bush not far above ground level, especially in bramble thickets. Four to six eggs are laid, which are like a dumpy oval in shape, and pale coloured with brown flecking. The young are fed hairless caterpillars until fledging around 12- 14 days after hatching. Occasionally the adults will raise a second clutch in July, before setting off south for the winter.

The overwintering European birds will have returned to their “homeland” to raise their broods there. It is always suggested that the male birds that will be most successful in breeding are those that establish their territory first, which begs the question, “Why don’t the German birds stay here after the winter and establish territories before the Brits even come back from the Mediterranean?”. No definitive answer has been established yet, but could be due to instinct driving the birds to return to the area they were themselves born in.

The conservation status of the Blackcap is “Good”, with numbers on the rise – about 1.2 million territories in the UK each year. However, this population is not helped by the continued catching of birds around the Mediterranean for the illegal consumption by humans. One analysis suggested that up to a quarter of western European Blackcaps meet their end through this despicable trade. Here, predation by domestic cats is an additional recognised problem. Even so, you are very likely to come across Blackcaps around Hankerton in the summer, hopefully while they are singing, and maybe if your garden has berried shrubs or you feed the birds, you will be seeing them at the time of this Nature Diary.



Male Blackcap

Steve Davies.



MUSEUM EVENTS

Further details & tickets available early 2026

<https://www.athelstanmuseum.org.uk/events/>

Fri 13 February - Quiz Night with light supper.

Thurs 19 February - Lace Making Day

Sun 22 February - History Club for children - Malmesbury at War

Weds 25 February - Teatime Talk - Julia Bowen - What has Town Twinning ever done for us?!

**Weds 18 March - Teatime Talk - Tony McAleavy - Story of Queen Matilda:
Malmesbury's Forgotten Royal Patron**

Sun 22 March - History Club for children - Eilmer

Thurs 9 April - Lace Making Day

**Weds 15 April - Teatime Talk - Anne Goodyer - Malmesbury's History as a Border
Town from Wessex/Mercia to WW2**

Sun 26 April - History Club for children - Railway in Malmesbury

Fri 8 May - Evening Talk - Julian Richards - A Career in Ruins.

**Weds 20 May - Teatime Talk - Bill Reed & Mike Lewis - Napoleon after Waterloo &
The lock of his hair in our Museum**

Thurs 28 May - Lace Making Day

Wed 3 June - Evening Talk - Ronald Hutton - Did King Arthur Exist?

**Weds 17 June - Teatime Talk - Susan Mockler - Malmesbury Union Workhouse:
Why? Where? When? Who?**

QUIZ NIGHT

light supper included
bar available

Prizes

Raffle

Fun!

Friday

13 February 2026

7pm - 10pm

Rausing Building
(old Moravian Church)

£12.50 per person

Tickets available in Museum

Teams of 4



In support of

Tickets available in Museum

and online: www.athelstanmuseum.org.uk

MURCOTT FARM SHOP

Welcome to our family farm shop in Crudwell, Wiltshire set in the beautiful Cotswolds, just moments from the historic town of Malmesbury. We have amazing 'Allpress' coffee, fresh produce, local meat and cheese, delicious honey and freshly baked bread and pastries. Everything you need for a delightful shopping experience awaits you here!



Find Us:

Murcott Farm Shop,
Unit 1, Crudwell Garage,
Crudwell,
nr. Malmesbury,
Wiltshire,
SN16 9EU

Contact

Please contact us at:
hello@murcottfarmshop.co.uk

Opening Hours

Mon - Sat 8:00 am – 6:00 pm
Sunday 10:00 am – 4:00 pm



MRB HEATING

www.mrbheating.co.uk

- Gas, Oil and LPG - Servicing, Repair and Installation
- Unvented Hot Water Systems
- Heat Pump Servicing and Maintenance
- Small Commercial Properties
- Water Booster Systems

Based in Malmesbury, Wiltshire

07921 266211
info@mrbheating.co.uk



Malmesbury Garden Centre is a locally run business supplying all your garden requirements. We are still open and have some gorgeous flowers and vegetable plants in, lots of seeds and gardening tools. The staff are very friendly and willing to help you with all your needs. The Cafe food is scrumptious too!

We are open:
Monday to Saturday: 9:00am – 5:00pm
Sunday: 10.00am – 4.00pm



Aurora Borealis comes to Hankerton!

If you were outside around 10pm on Monday 19th January, maybe putting the rubbish out or letting your dog out for a final wee of the day (as in our case!) you may have been stopped in your tracks with the astonishing sight of the Northern Lights above you head! If you missed it here are just a few of the amazing photos taken on the night...





Photos courtesy of Paul O'Brien using his phone



Amenity Area

Dear Residents of Hankerton,

I am writing to share an exciting project to enhance our village's Amenity Area located next to Old Farm Close. We are planning to plant a selection of new trees to make this space more inviting, and we would love for you to be a part of it.

Our goal is to create a vibrant community orchard and garden that

encourages everyone to enjoy the area. We hope these trees will not only beautify our surroundings but also provide fresh fruit for residents to help themselves to in the coming years.

We are looking for donations to help fund the purchase of these trees. If you would like to contribute, you can choose to:

- **Make a general donation** toward the upkeep and planting of the area.
- **Sponsor a specific tree**, which can include a name plaque or dedication of your choice.

By supporting this project, you are helping to improve our local environment and creating a lasting legacy for the village. We also welcome any volunteers who might like to help with the initial planting or occasional tidying of the site.

If you are interested in contributing or would like more information, please contact me at katenurden75@gmail.com or drop a note to 1 Hillwell, Hankerton but please respond very soon as the first planting season is on us now, finishing perhaps at the end of March, so we need to get on with it (or else delay the planting until autumn).

Thank you for your time and for helping to make our village an even better place to live.

Best regards,

Hankerton Parish Council.

Join us @ Café Church

First Saturday of the month

11am – 12.30pm

Hankerton Church



*Coffee &
Lovely Snacks*

PRAYER PRAISE & STORY

pps. I love you

an informal service for the
whole braydon brook community

4.30PM HANKERTON CHURCH
EVERY 3RD SUNDAY OF THE MONTH

Services across the Braydon Brook Benefice

All are welcome to attend any of the services taking place across the Benefice



Date	Services in Church		Additional information
Sunday 1 st February	9.30am, Holy Communion @ Hankerton		
	10am, Friends & Family @ Crudwell		
	11am, Holy Communion @ Oaksey		
	6pm, Evening Service @ Ashley		
Sunday 8 th February	10.00 am, Benefice Communion @ Ashley		
Sunday 15 th February	9.30am, Holy Communion @ Charlton		
	9.30am, Morning Praise @ Crudwell		
	11am, Holy Communion @ Minety		
	11am, Matins @ Oaksey		
	4.30pm Prayer, Praise & Story @ Hankerton		
Sunday 22 nd February	9.30am, Holy Communion @ Ashley		
	9.30am, Morning Praise @ Charlton		
	11am, Holy Communion @ Crudwell		
	11am, Morning Praise @ Minety		
	10.00 Kids Club and 11am, Family Service @ Oaksey		
Mid-Week Services and Events			
Tuesday	Weekly	9.00am	Morning Prayer via Zoom
Wednesday	11 th February (2 nd Wed)	10.30am	Coffee & Chat @ Crudwell
	18 th February (Ash Wednesday)	12.00 Noon	Holy Communion & Imposition of Ashes @ Ashley
	Weekly	7.00pm	Men’s Bible Study 1 Days Court, Crudwell
Thursday	12th February (2 nd Thu)	9.45am	BCP Communion Service @ Minety
Friday	Weekly	9.00am	Morning Prayer via Zoom
Saturday	7 th February (1 st Sat)	11am – 12.30pm	Café Church @ Hankerton

Please visit our website www.braydonbrook.co.uk and Braydon Brook Churches Facebook Page to find out more.

Services across the Braydon Brook Benefice

All are welcome to attend any of the services taking place across the Benefice



Date	Services in Church	Additional information
Sunday 1st March	9.30am, Holy Communion @ Hankerton	
	10am, Friends & Family @ Crudwell	
	11am, Holy Communion @ Oaksey	
	6pm, Evening Service @ Ashley	
Sunday 8th March	10.00 am, Benefice Communion @ Charlton	
Sunday 15th March	9.30am, Holy Communion @ Charlton	
	9.30am, Morning Praise @ Crudwell	
	11am, Holy Communion @ Minety	
	11am, Matins @ Oaksey	
	4.30pm Prayer, Praise & Story @ Hankerton	
Sunday 22nd March	9.30am, Holy Communion @ Ashley	
	9.30am, Morning Praise @ Charlton	
	11am, Holy Communion @ Crudwell	
	11am, Morning Praise @ Minety	
	10.00 Kids Club and 11am, Family Service @ Oaksey	
Sunday 29th March	10.00 am, Benefice Communion @ Crudwell	

Mid-Week Services and Events

Monday	30th March	5.30pm	Stillness & Peace Service @ Charlton
Tuesday	Weekly	9.00am	Morning Prayer via Zoom
Wednesday	11th March (2nd Wed)	10.30am	Coffee & Chat @ Crudwell
	Weekly	2pm	Women's Discussion Group 1 Days Court, Crudwell
	Weekly	7.00pm	Men's Bible Study 1 Days Court, Crudwell
Thursday	12th March (2nd Thu)	9.45am	BCP Communion Service @ Minety
Friday	Weekly	9.00am	Morning Prayer via Zoom
Saturday	7th March (1st Sat)	11am – 12.30pm	Café Church @ Hankerton

Please visit our website www.braydonbrook.co.uk and Braydon Brook Churches Facebook Page to find out more.



Charlton and Hankerton Quiz

What is the UK's top food and drink export?

In 1844 USA and Canada played the first international match in which sport?

Gloucester RFC are known as the _____ and Whites

(Answers below)

Over 70 people attended the Charlton and Hankerton Quiz last November in Charlton Village Hall. Hankerton residents John Thorne, quiz master, with Peter Wyman, audio and scorer, and Philip Carter, assistant, were joined by village hall committee members in the organisation of the quiz.

Questions covered general knowledge, fruit in popular culture, links, Wales, and music about the weather. Participants were asked to taste and identify 10 different types of herb.

Over £1200 was raised, which has already been spent on improving the play equipment next to the village hall. Hankerton residents are entitled to a discount for hire of the hall: charltonvillagehall.co.uk.

This is the ninth time John, Peter and Philip have run the quiz with Charlton. The next quiz is likely to be in the spring.

John Thorne

Answers: whisky, cricket, Cherry

Moulders Mutts



I am pleased to announce 📢 that I have completed the Emmi-Pet training course and am able to offer professional ultrasonic teeth cleaning for your dogs 🐾🦷

- ✅ Gentle, silent, non invasive and vibration free
- ✅ Prevents plaque, tartar, gum disease, bacteria and bad breath
- ✅ Pain and stress free
- ✅ Helps reduce costly vet bills and anaesthesia

I am so excited to be able to help dogs with their dental health and give them a sparkly healthy smile ✨

If you are interested and want further info, please get in touch – Jane Moulder 07796 273743 or mouldermutts@gmail.com

Cook Wanted at Malmesbury Garden Centre!!!

Job Summary

We are seeking a passionate and skilled Cook/Chef to join our Garden Centre Cafe. The successful candidate will be responsible for preparing and cooking a variety of dishes, ensuring high standards of food quality, presentation, and safety.

Responsibilities

- Prepare, cook and present a wide range of dishes according to established recipes and standards
- Ensure all food is prepared in accordance with food safety and hygiene regulations
- Maintain cleanliness and organisation of the kitchen area at all times
- Collaborate with team members to ensure smooth kitchen operations during service periods
- Serve food efficiently and courteously to guests when required
- Adhere to health and safety policies at all times, including proper handling of kitchen equipment and ingredients

Skills

- Proven experience in food preparation and cooking within a professional kitchen environment
- Strong knowledge of food safety standards and hygiene practices
- Excellent organisational skills with the ability to work efficiently under pressure
- Experience working in a restaurant or hospitality setting is desirable
- Ability to work as part of a team, demonstrating flexibility and professionalism
- Effective communication skills to coordinate with colleagues and serve guests courteously

Job Type: Full-time Pay: £14.00-£16.00 per hour

Expected hours: 35 – 40 per week

Work Location: Malmesbury Garden Centre-

Please Contact- Caz Cook Manager- 01666 822809 Or

Email nurden_garden@btconnect.com



Be there when it matters and volunteer in a Sue Ryder shop

We're always looking for new volunteers to help us run our charity shops across the UK. If you have an eye for a bargain, get excited about sustainable fashion, love helping customers discover pre-loved treasures or want to join a friendly team – we want you.

When you choose to volunteer with us you will have the opportunity to:

- Join a friendly team
- Make new friends
- Gain confidence
- Get valuable retail experience
- Develop customer service skills
- Give back to your community
- Enhance your CV
- Increase your employability
- Get a 25% discount off donated goods
- Support people through the most difficult times of their lives.



We have a variety of volunteering opportunities to suit you. No experience is required as we can offer you full training and can be flexible around your availability.

Sue Ryder is a charity registered in England and Wales (1052076) and in Scotland (SC039578).
Ref. No. 07376, © Sue Ryder, January 2022.



palliative,
neurological
and bereavement
support

Volunteer at Sue Ryder – Malmesbury

Our shop offers a variety of volunteering opportunities beyond general retail roles, including:

- **Digital volunteers** interested in learning to list donated items on eBay
- Volunteers who could be trained as **Lead Volunteers**
- General **Retail Volunteers**

Volunteering at Sue Ryder provides a welcoming environment where individuals can gain skills, build confidence, and connect with others, all while supporting our healthcare cause. Roles are flexible and fully supported with training and guidance.

Sue Ryder Malmesbury Shop

The Gant, Cross Hayes, Malmesbury SN16 9BE

 01666 824 956

A New Year of Connection and Community Care

By Roz Savage MP, South Cotswolds



January often arrives with a mix of feelings. For some it brings that welcome sense of a fresh start - a clean slate, new ambitions, hopeful beginnings. For others it can feel like a much quieter, more solitary month. The festivities have faded, the nights are still long, and the return to routine can leave many of us feeling a little adrift.

This is exactly why the work of our local community organisations matters so much at this time of year. I was genuinely honoured recently to become a Patron of The Churn Project, a charity that has been at the heart of Cirencester for many years. The Churn supports people of all ages who may be facing isolation, financial pressures, or challenges with confidence and wellbeing. Last year alone, 1,762 people found connection, companionship, or practical help through its programmes - an extraordinary testament to what a caring community can achieve.

When you step into their building, you feel it straight away - warmth, dignity, and a deep sense of welcome. As Sarah Bourne, their CEO, put it so beautifully, the Churn is built on compassion, courage, and a belief in what people can achieve when they feel supported. I have seen firsthand the difference this makes, and I am delighted to play a small part in helping the charity continue strengthening community life across the South Cotswolds.

Another wonderful example of local togetherness is The Long Table, now with vibrant hubs in both Stroud and Cirencester. I had lunch there recently with my team, and it reminded me just how powerful a shared meal can be. Every hot dish is offered on a pay-as-you-can basis, making sure that everyone has access not only to good food but to company and conversation too. It is hospitality with purpose - a beautifully simple idea rooted in the belief that everyone deserves a place at the table.

That spirit of connection is sparking new ideas right across our area. The Barn Theatre is currently seeking initial funding for an exciting Barn Bus pilot, which would help isolated older residents travel safely to the theatre, with time to shop and socialise beforehand. By putting to use the transport that otherwise sits idle between school runs, the project could become a lifeline during the times of year when loneliness is felt most keenly. We

know that engagement with the arts boosts memory, joy and wellbeing, and this scheme could help open those benefits to many more people across Tetbury, Fairford, Lechlade and our surrounding villages.

All these initiatives remind us of something essential. Wellbeing is about more than treatment or services, it is about belonging, shared experiences, and feeling part of community life. As Parliament moves the Mental Health Bill through its final stages, I welcome the progress - and I will continue pressing the Government to look beyond crisis care and invest in the community-led support that prevents people reaching that point in the first place.

January may be quiet, but it is also full of potential. When we come together - over a meal, through a theatre visit, or simply by checking in on a neighbour - we lay the foundations for a kinder, more connected year ahead.

Warm wishes,

Roz

roz.savage.mp@parliament.uk

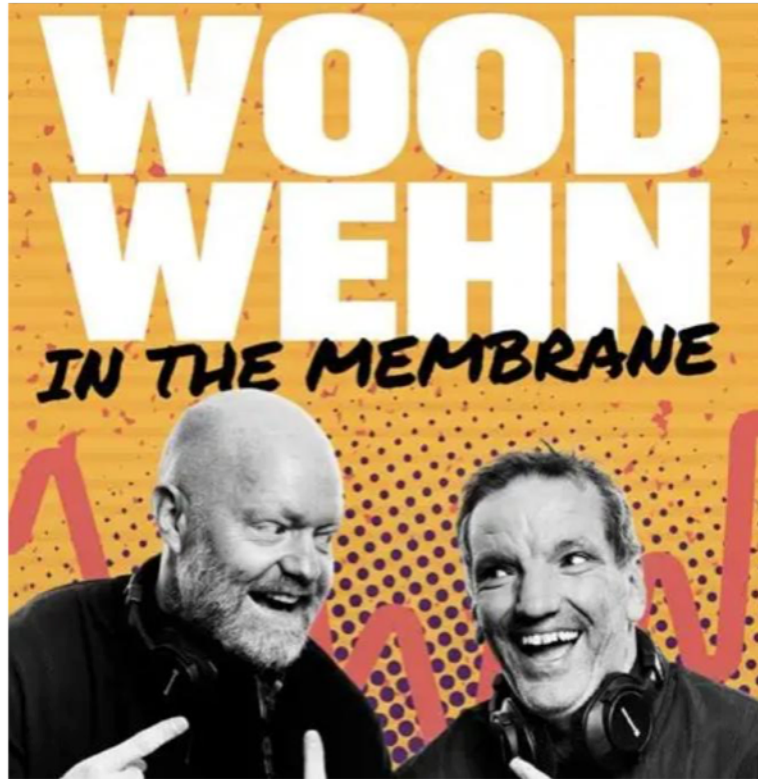
01285 300555

Salt Bins



New people to the area might not be aware that there are 2 salt bins in the village – one by the corner of the Cloatchley Road and the other by the sharp bend by Loose Ends/Lifestyle Health and Beauty Salon. Anyone is allowed to use them if the roads are icy but should probably let people know (via the WhatsApp group?) exactly where they have spread it so that dog walkers can avoid it – salt is not good for doggie paws!

Message from the Ministry



I saw a clip of a conversation with comedian Henning Wehn discussing with Jake Wood how if he was a Christian, he would be really mad about the people who only come to church at Christmas. They joked that it's like football - people should have been to a few games before they are allowed to stay for the big match, and that most of them don't even know the names of the players "who's this Gabriel?" , or that churches should just close altogether for these times! "Let them come on wet morning in February! "You can't come and wash all your sins in 10 minutes and boom, you're done for the rest of the year"

It was funny, and it was nice to hear a mainstream comedian talk positively about church, but I felt that they had spectacularly missed the point.

Someone had commented on the video quoting theologian William Temple: 'church is the only organisation that exists primarily for the benefit of its non-members'.

Church is not just here for the people who walk through the door on Sunday mornings.

Church is there for the lonely

Church is there for the joyful

Church is there for the family

Church is there for the bereaved

Church is there for the seeker

Church is there for the community it serves

We are the family of God – his only mouth and hands in this world – and we long to share him with anyone and everyone who walks through that door, whether it's for the 1st time or the 1000th time, whether it's in a beautiful act of worship or a fun community event. It's a complete joy to welcome new people or occasional attendees – you are such an important part of our church family (and having lots of people makes singing hymns so much more fun!)

So no, Henning, thanks for the laughs, but we won't be closing our doors and keeping to ourselves as Easter approaches – we'll be flinging them wide open, and asking anyone who might be interested to come inside and join us for a wonderful celebration – we are each a beloved child of God, and all are welcome in his house.

Just don't forget, we're here all year round too, so don't be a stranger.

Rev'd Bob

The Hannah Ludlow Charity.

Hopefully, as a result of previous Grapevine articles and word of mouth, most parishioners will be aware of this village charity, but with new arrivals in the village this brief notice aims to maintain that awareness. The simple aim of the charity is to help members of our community who are in a position of need, hardship or distress.

Although trustees of the charity try to be aware of those who may qualify for such support, it could quite easily be the case that some hardship or distress may be unknown to them, and a request for assistance can be made directly by the affected person, or by a friend, neighbour or relative on their behalf. Applications for support can be made to The Chairman, Hannah Ludlow Charity, 1 Cloatley Road, Hankerton, Wiltshire. SN16 9LA, whenever that need arises. All verbal approaches or correspondence are treated in strictest confidence, and only open to the Chairman and trustees of the charity.

As a small charity, the support that can be given is limited, but even a little financial gesture reinforces that fellow villagers do care, and it may help to make a difference in outlook for that person in need.

The charity is also able to support young people in the parish who may be raising funds to enable them to undertake charitable work at home or abroad. So, keep an eye on each other, as people in Hankerton always do, and contact the charity if assistance could be given.



WHEN DARKNESS TAKES FLIGHT

We were hungry and You fed us with good things - You put melody and fervour in Your
Word to bring

Truth, as we are learning it, to those who do not know - Bringing Light into their darkness
to let Your Spirit flow...

You live in us, bring understanding to our hearts Took us from our wilderness, gave us a
brand new start

Since Time began, Your Word did too - All Scripture is God-breathed through You.
We believe in You and You have set us free - To share our knowledge with others such as
me

You have changed our lives from water into wine And we thank You deeply as we drink,
become refined...

You have filled our new hearts with radiance and light - Your Spirit now lives in us,
darkness has taken flight...

05.05.97.

© Copyright Shelagh Dalton 1997

Wheatsheaf Inn Crudwell

Take away service

Please ring 01666 577739 or

Email tobygregory@aol.com

Available:

Wednesdays, Thursdays, Fridays and Saturdays:

12.00pm to 1.30pm and 5.30pm until 7.00pm

Sunday (roasts only) £13.00: 12.30pm to 1.00pm

Order early to avoid disappointment!

Menu choices:

Teriyaki chicken with rice or chips (£14.95)

Moroccan vegetable Tagine with rice (£13.95)

Crispy breaded scampi with chips or salad (£14.25)

6oz Cheeseburger and bacon with chips (£12)

Cajun Chicken Caesar salad (£13.75)

Beer battered cod and chips (£14.95)

Chicken Madras Curry with rice and naan bread (£14.25)

Beef lasagna or vegetable Lasagna with chips (£14.75)

Spicy Vegetable burger, salsa and chunky chips (£13)

Pan fried Lambs Liver with mash and onion gravy (£14)

Desserts (*to be heated at home)

All £4.00

Sticky Toffee Pudding with custard*

Bread and Butter Pudding with custard*

Butterscotch ice-cream sundae

Cash or card payments

Local Deliveries by arrangement

See www.wheatsheafcrudwell.co.uk for updates



Patients Participation Group

Surgery News

Flu & Covid vaccines

Took place in October. Uptake was lower this year, although 4,500 adults and 300 2-3 year olds received their vaccinations. There is some concern that whilst MPCC buys and pays in advance for vaccines at a cost of £17 plus VAT per person, if people book but then do not attend, the cost and waste has to be borne by the practice.

Staffing levels

As of 7/10/25, Dr Jenny Whinney began her role in providing maternity cover. There are now 14 permanent doctors attached to MPCC.

On line access to appointments

From the 1 October 2025 all GP Practices have to provide online access for appointments. At MPCC this is available via PATCHs.

Continuity of care

MPCC is looking into ways in which continuity can be enhanced, so that e.g. blood results requested by one GP are returned to that named GP.

Seeing the same GP helps them know you better, making your care more personal, accurate, and quicker over time. It means fewer repeated tests, better advice, and better health overall for patients.

Patient survey

In the patient survey, some patients told us they didn't know that GP appointments could now be booked in advance, with a GP of their choice, at any time during the day.

Appointments are bookable in advance for patients:



in person at the front desk



or over the phone

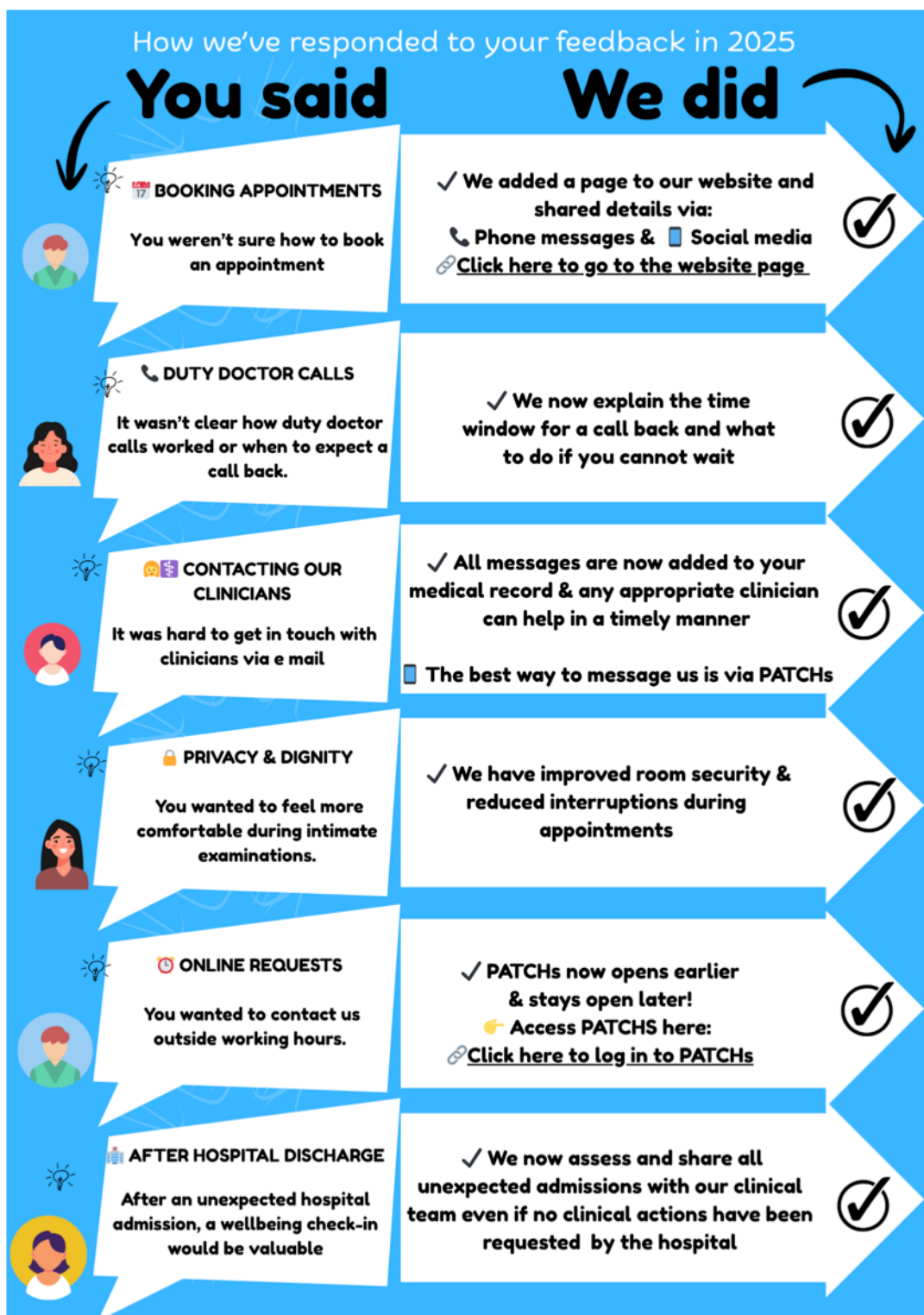


or online, via PATCHs <https://tinyurl.com/3tzeanjp>

Patient survey

An update on how things have progressed.

If you have any comments that you would like to make about the services at MPCC please do not hesitate to let me know and I'll be very happy to take this forward. My contact number is 07856202115.



The next Patient Participation Group meeting is on 3 February 2026.
Other provisional dates for meetings in 2026 are: 7 April, 2nd June, 4 August, 6 October and 8 December.

Shayne Smith

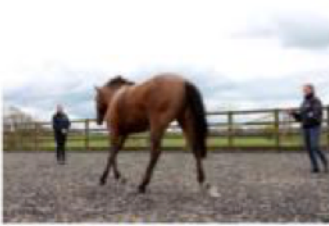


The
GEORGE
Equine Clinic

01666 826456

24 HOUR EMERGENCY COVER

www.georgevetgroup.co.uk



Find us on
Facebook



The
GEORGE
Veterinary Hospital



**AROUND THE CLOCK
EMERGENCY CARE**

www.georgevetgroup.co.uk



Malmesbury

01666 823165